

## Math Algebra 8\_4

Student Name: \_\_\_\_\_

Date: \_\_\_\_\_

1.

$$y = 3x + 3$$

$$x = 1000$$

$$y = \underline{\hspace{2cm}}$$

- A. 3003
- B. 3000
- C. 3006

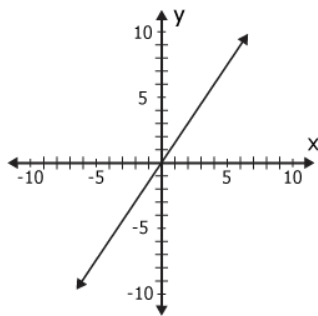
2.

Bill gets 4 points for each correct answer (c).

Which shows how many points (p) he has in all?

- A.  $y = x - 4$
- B.  $y = x + 4$
- C.  $p = 4c$

3.



y-intercept =  $\underline{\hspace{2cm}}$

- A. 4
- B. 2
- C. 0

4.

$$y = \frac{1}{2}x - 2$$

$$x = 6$$

$$y = \underline{\hspace{2cm}}$$

- A. 1
- B. 2
- C. 6

5.

Which line has a slope of  $\frac{1}{2}$ ?

- A.  $y = 2x + \frac{1}{2}$
- B.  $y = \frac{1}{2}x - 5$
- C.  $y = 3x - \frac{1}{2}$

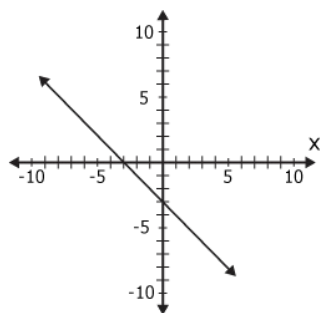
6.

$$y = -10 + \frac{3}{4}x$$

slope = \_\_\_\_

- A.  $\frac{3}{4}$
- B.  $-\frac{3}{4}$
- C.  $\frac{4}{3}$

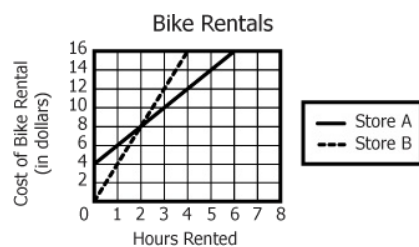
7.



slope = \_\_\_\_

- A. 0
- B. 1
- C. -1

8.



Tim rents a bike from Store A for 3 hours. Jan rents a bike from Store B for 1 hour.

Tim pays \_\_\_\_ more than Jan?

- A. \$8.00
- B. \$4.00
- C. \$6.00

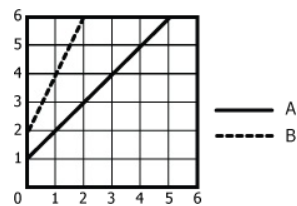
9.

$$y = \frac{1}{4}x + 5$$

slope = \_\_\_\_

- A. 5
- B.  $5\frac{1}{4}$
- C.  $\frac{1}{4}$

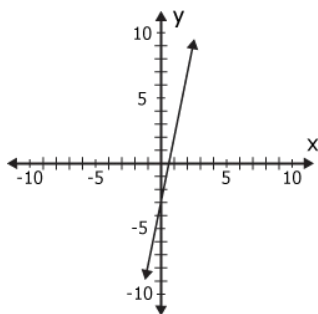
10.



Which fits Line A?

- A.  $y = 2x + 2$
- B.  $y = 2x + 1$
- C.  $y = x + 1$

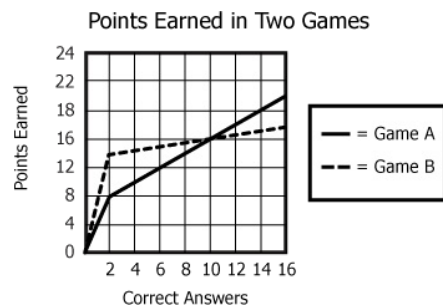
11.



Which fits the line?

- A.  $y = 5x - 3$
- B.  $y = 5x + 3$
- C.  $y = -5x + 3$

12.



Which game has more points for less than 10 correct answers?

- A. Game B
- B. Both the same
- C. Game A

13.

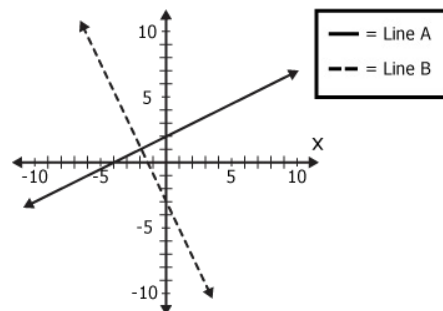
$$y = 2x + 4$$

$$y = 3x + 2$$

Where do the lines intersect?

- A. (2, 8)
- B. (2, 0)
- C. (8, 2)

14.



Slope of Line B = \_\_\_\_

- A. 2
- B. -2
- C. -4

15.

$$y = \frac{5}{6}x - 6$$

slope = \_\_\_\_

- A. 6
- B. -6
- C.  $\frac{5}{6}$

16.

Which is parallel to  $y = 5x + 2$ ?

- A.  $y = 5x - 24$
- B.  $y = 24x - 5$
- C.  $y = 29x$