

## Math Algebra 8\_1

Student Name: \_\_\_\_\_

Date: \_\_\_\_\_

1.

$$y = x - 7$$

$$x = 4$$

$$y = \underline{\quad}$$

- A. 3
- B. -3
- C. 4

3.

$$x + 5y = 28$$

$$2x + 3y = 21$$

Solve for x and y.

- A.  $x = 6, y = 1$
- B.  $x = 3, y = 5$
- C.  $x = 8, y = 4$

2.

Ann reads 10 pages of her book every day.

She reads 2 more pages in every free minute.

She has 12 free minutes today.

How many pages does she read today?

- A. 24
- B. 22
- C. 34

4.

Which line has a slope of 3 and a y-intercept of 4?

- A.  $y = 4x + 3$
- B.  $y = -3x - 4$
- C.  $y = 3x + 4$

5.

Which is parallel to  $y = 8x + 4$ ?

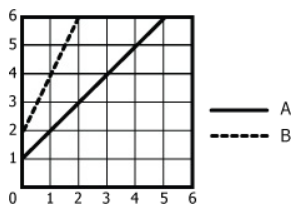
- A.  $y = 4x + 8$
- B.  $y = 12x$
- C.  $y = 8x - 4$

6.

slope = 1  
y-intercept = 5  
Which fits?

- A.  $y + x = 5$
- B.  $y = x + 5$
- C.  $y = 5x + 1$

7.



Which fits Line B?

- A.  $y = 2x + 2$
- B.  $y = \frac{1}{2}x + 1$
- C.  $y = \frac{1}{2}x + 2$

8.

slope = 5  
y-intercept = 3  
Which fits?

- A.  $y = 3x + 5$
- B.  $y = 5x + 3$
- C.  $y = 3x - 5$

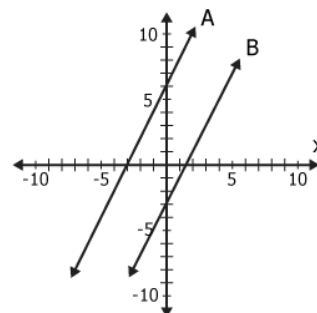
9.

$$y = 12x - 6$$

y-intercept = \_\_\_\_

- A. 6
- B. -6
- C. 12

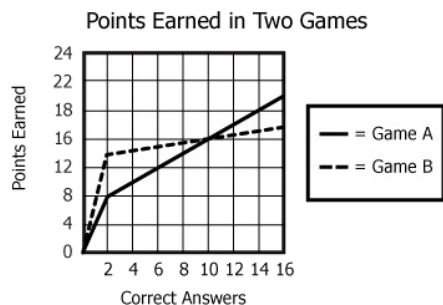
10.



Which fit these lines?

- A.  $y = 2x + 3$   
 $y = -2x - 3$
- B.  $y = 2x + 6$   
 $y = -2x - 3$
- C.  $y = 2x + 6$   
 $y = 2x - 3$

11.



Which game has more points per answer after 10 correct answers?

- A. Game A
- B. Both the same
- C. Game B

12.

x	y
-1	-4
0	-3.5
1	-3
2	-2.5
3	-2
4	-1.5

What is the y-intercept?

- A. -3.5
- B. -4.0
- C. 0.5

13.

$$\text{slope} = \frac{y_2 - y_1}{x_2 - x_1}$$

A line has points (5, 12) and (7, 16).

slope = \_\_\_\_

- A. 2
- B. 4
- C. 5

14.

$$y = 2x + 5$$

$$x + y = 8$$

Where do the lines intersect?

- A. (-1, 7)
- B. (1, 7)
- C. (8, 1)

15.

$$y = 4x - 20$$

y-intercept = \_\_\_\_

- A. 4
- B. 20
- C. -20

16.

x	y
0	1
1	4
2	7
3	10

Which fits?

- A.  $y = 3x + 1$
- B.  $y = x + 3$
- C.  $y = \frac{3}{x} + 1$